

Firefly®

LED Lighted Swing

By XDP RECREATION, LLC

MODEL 75115 PRODUCT MANUAL

PATENT PENDING



Fun Day or Night!

**Motion
Activated**

24 Bright, Flashing, Blinking, Strobing Multi-Colored LED LIGHTS

- Attaches to any frame or swing set
- Ropes, Chain and Hardware Included
- For Children Ages 3+
- Maximum Weight: 150 lbs / 68 kg
- For use under Adult Supervision
- Adult Assembly required, per these instructions

Included In Kit:

- 1) LED Swing
- 2) Rope / Chain
- 3) Carabiners (2 Each)
- 4) Hardware For Assembly (Washer, Cap Washer, Nut. 2 Each Of Each Component)
- 5) Assembly Instructions

WARRANTY: Limited – 90 Day Warranty from Purchase Date.

Do not return to retailer



WARNING

Adult supervision & installation is required.
See product manual for complete assembly
and usage instructions.

This product is for children ages 3+
Maximum user weight is 150 lbs
NOT FOR COMPLETE DARKNESS

Requires 3 AA batteries. When lights start
to dim, replace batteries as shown in manual.



XDP RECREATION, LLC
Alpharetta, GA, 30005 USA
1.866.884.0535
www.xdp-recreation.com
service@xdp-recreation.com

Assembly:

Tools Required:

1) Adjustable Wrench Or Wrenches

PARTS LISTING for Assembly:

J1 – Rope/Chain (2 each)
(Attach to Swing via J3)

J3 – Eye Bolt with Attachment Bolt.
(Pre-Assembled to ROPE) (2 each)

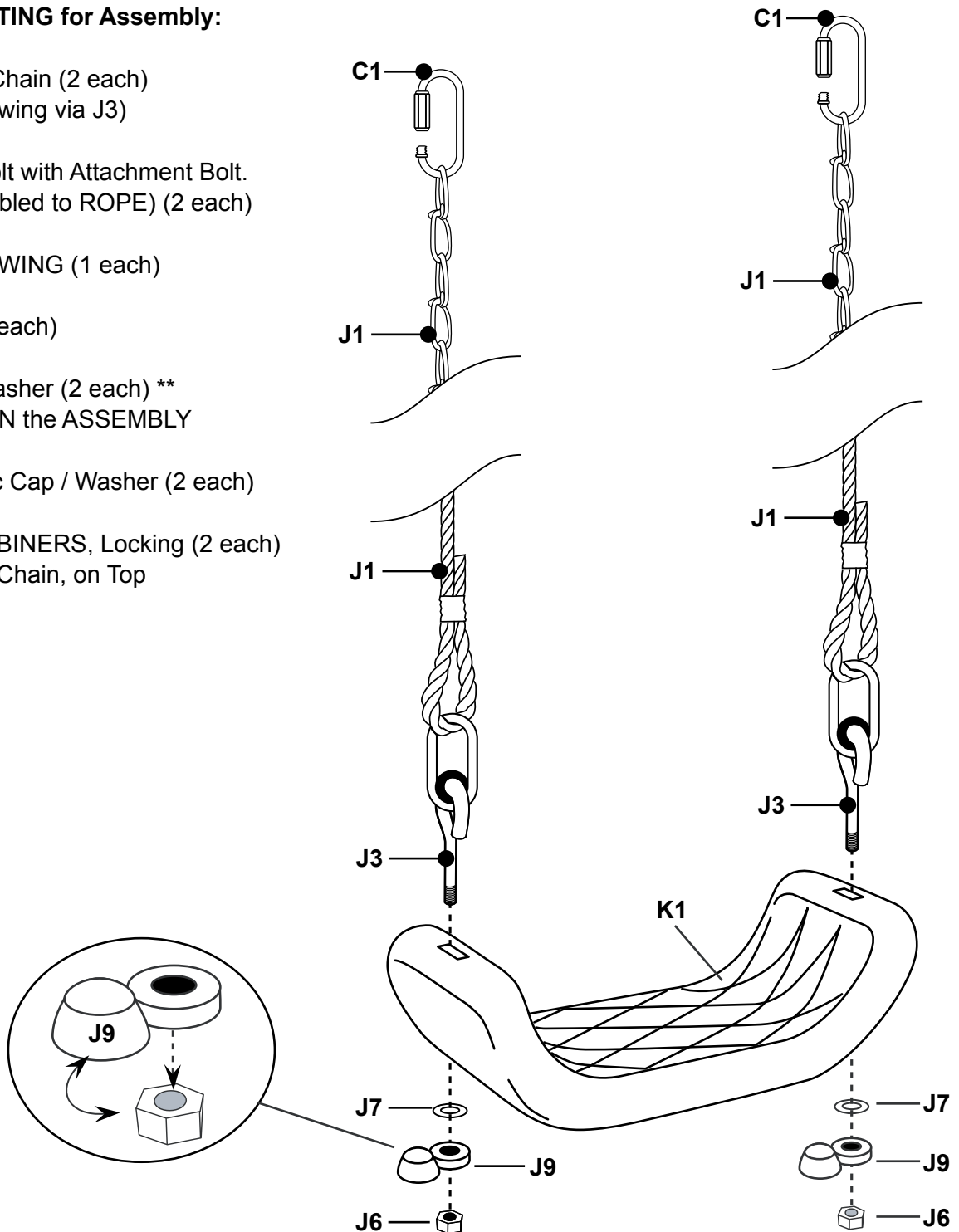
K1 – LED SWING (1 each)

J6 – Nut (2 each)

J7 – Flat Washer (2 each) **
MUST be ON the ASSEMBLY

J9 - Plastic Cap / Washer (2 each)

C1 – CARABINERS, Locking (2 each)
attaches to Chain, on Top



Images and illustrations not to scale.

All images shown are for illustration
purpose only. Actual product may vary
due to product enhancement.

Battery Installation

(Adult installation required)

3 AA Batteries are required but not included.
The Battery Compartment is located on bottom of swing.
Two screws are used to secure the Battery Cover.
Use #1 Phillips screwdriver to remove screws and cover.
Insert 3 "AA" Batteries.
Make sure to match polarity of batteries with polarity of unit.
Replace Battery Cover and secure with screws.
Make sure Cover is properly seated to keep out moisture.

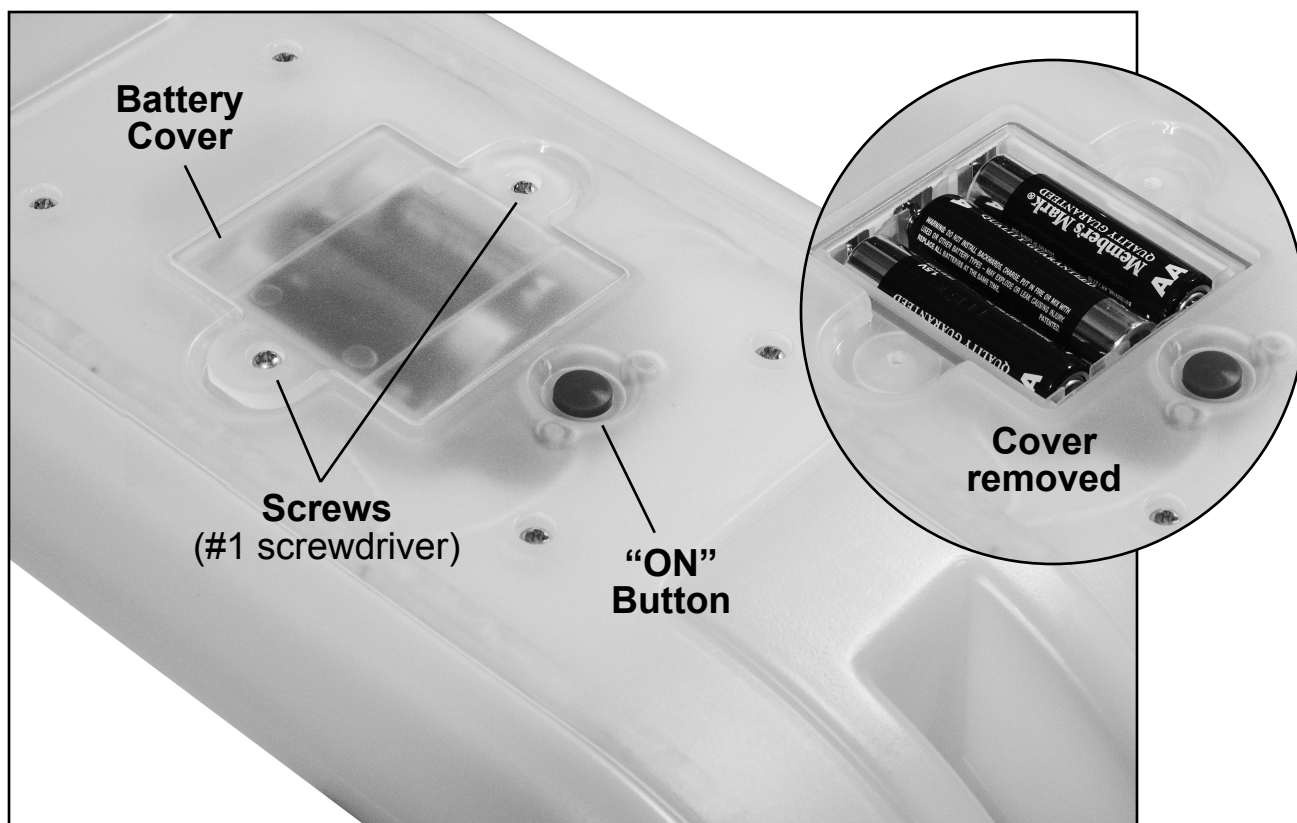
BATTERY WARNING:

Battery Acid Leakage can cause severe injury to people and cause significant damage to the product and to property that comes within contact with it. If battery leakage occurs, wear hand & Eye protection and wash with water and baking soda (if available) and make sure to not get any acid on you or your clothing. If you get acid on your clothing – wash them immediately or damage may occur. If you get acid on your body, rinse with water immediately and seek medical attention. Dispose all batteries according to Local, State and Federal Law

Operation/Activation

Press RED button under swing to activate LED lights.
Swinging motion of the swing will keep lights enabled/on.
Lights will automatically turn off after 8-10 minutes of non-use / non-motion.

When lights get dim or go out, replace with new or re-charged AA batteries.



All images shown are for illustration purpose only. Actual product may vary due to product enhancement.

THANK YOU for your purchase of the “FIREFLY” LED SWING. For Best and Safe usage and results, please follow the assembly instructions above/ below and if there are any questions please contact XDP RECREATION LLC, Service Department at 1.866.884.0535, service@xdp-recreation.com or on the website at www.xdp-recreation.com.

DO NOT RETURN your Product to the Retailer if help is needed. Please contact XDP Recreation at the Phone/Email/WEB SITE noted above.

Choosing the Location for the FIREFLY LED Swing:

Since it is a Front to Back Swing Movement only (no side-to-side movement) there are a few rules to use.

- The Location should be on Level Ground and a minimum of 6’ away from any structure or object nearby, Such as Fences, Houses, Separate Garages, Tress and Tree branches, Laundry Lines, Electrical Wires, etc. If on a Swing Set Frame, allow 17” of space, on both sides of the Firefly Swing, and /or between the other ‘rides/swings’. **The lowest part of the Swing is 8” from the Ground, MINIMUM.**
- Do NOT install over Cement or Asphalt, hardened packed down earth, grass, carpet or any HARD Surface. A fall on any hard surface can result in injury or death to the user.
- Be certain that the structure the FIREFLY Swing is being attached to can support over 400 lbs / 182 kgs. Weight includes User, and Firefly Swing, and accounts for swing torque motion.

USAGE RULES and OBSERVATIONS to Abide By:

- Age use for this Product is 3+ years, with a maximum weight of user being 150 lbs or less.
- Setup and assembly of the product should be handled and done by an ADULT. Adult Supervision is required at all times during usage.
- Children must NOT use the Firefly Swing until it is completely assembled and installed by an Adult.
- One (1) user at a time – 3+ years of age with a weight limit of 150 lbs.
- An Adult should instruct the user/child how to swing, front to back, on the seated swing. Centered properly on the swing and holding firm to the Rope/Chain.
- Do not loop the Rope/Chain over any top bar or tree limb, etc.
- Do not Twist or ‘helicopter’ the rope/chain while swinging. This cause weakness for the Rope/Chain.
- Instruct Children to remove their bike helmets/sports helmet, and not to wear any helmets while swinging on the Firefly Swing.
- Dress Children in well fitted and full foot enclosed footwear. Examples of inappropriate footwear are: Clogs, Sandals, Flip-Flops, etc.
- Wait until you have completely stopped before dis-mounting the Firefly Swing.
- If you have worn or damaged components, contact XDP Recreation for replacement parts at the noted Service phone numbers, email addresses and web site.
- Do Not Use in WET CONDITIONS or when Lightning is present.
- Keep people away from the Child using the Firefly Swing.

RECOMMENDATION:

XDP Recreation Recommends you review this Handbook for your Outdoor play product:

OUTDOOR HOME Playground Safety Handbook

<https://www.cpsc.gov/s3fs-public/324.pdf>